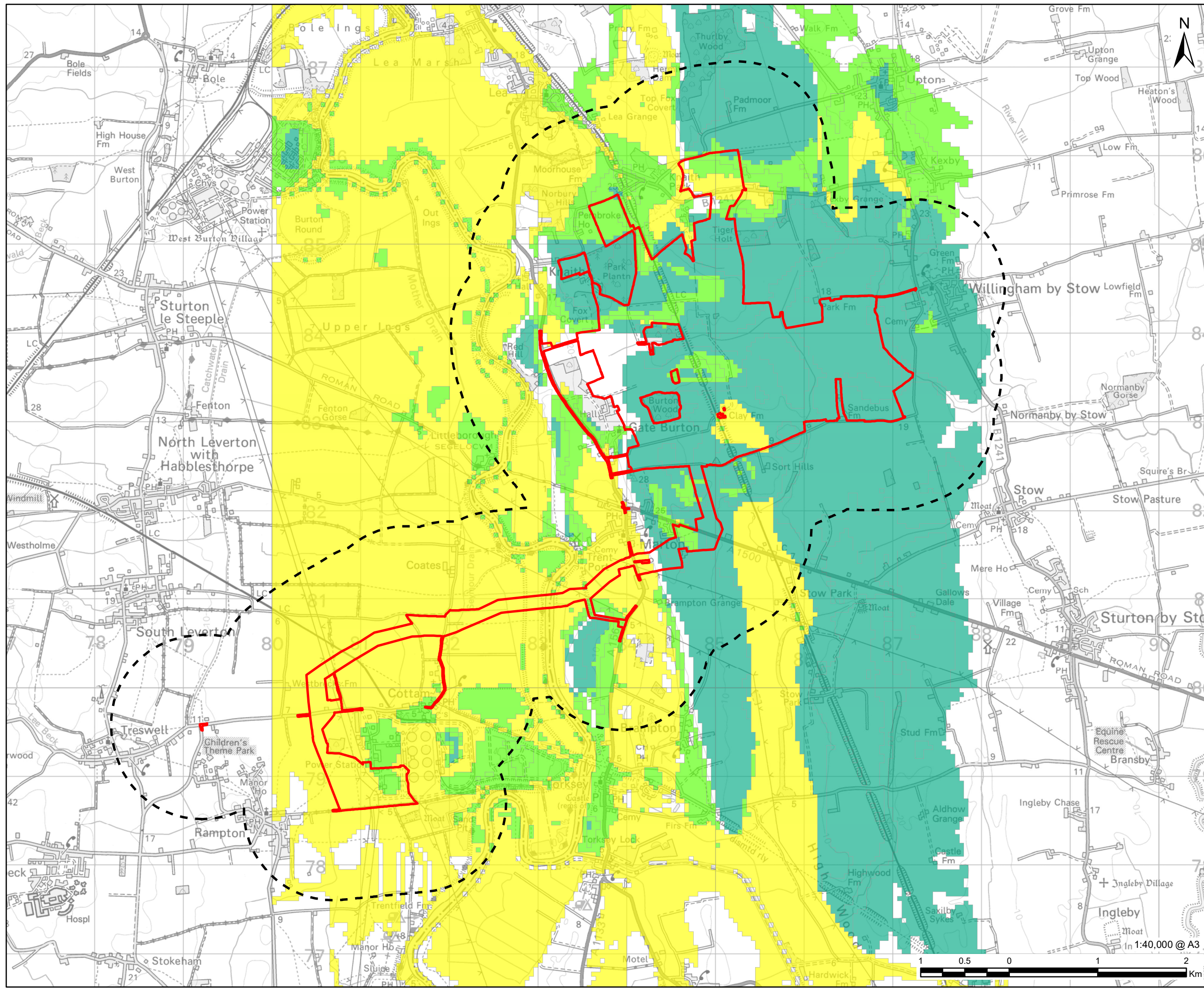


Revision: 01 Drawn: VC Checked: RS Approved: WB Date: 2022-11-24
Filename: i:\na.aecomnet.com\ms\EMEACroydon\UKGRD1\Legacy\UKCRD1\Legacy\UKCRD1\FP001-V1\IE\projects\general\GIS\Projects\Gate Burton Energy Park\K02_Maps\Environmental Statement\Chapter 09 - Water\WTR_ES_Figure 5_GroundwaterFloodRisk.mxd



AECOM
PROJECT
Gate Burton Energy Park

CLIENT
Gate Burton
ENERGY PARK

CONSULTANT
AECOM Limited
Sunley House
4 Bedford Park
Surrey, CR0 2AP, UK
www.aecom.com

LEGEND

- Order
- 1km
- Limited potential for groundwater flooding to occur
- Potential for groundwater flooding of property situated below ground level
- Potential for groundwater flooding to occur at surface

NOTES
© Crown copyright and database rights 2022.
Ordnance Survey 0100031673. Contains data from British Geological Society 2022.

ISSUE PURPOSE
Environmental Statement

PROJECT NUMBER
60664324

FIGURE TITLE
Groundwater Flood Risk

FIGURE NUMBER
Figure 9-5

This drawing has been prepared for the use of AECOM's client. It may not be used, modified, reproduced or relied upon by third parties, except as agreed by AECOM or as required by law. AECOM accepts no responsibility, and denies any liability whatsoever, to any party that uses or relies on this drawing without AECOM's express written consent. Do not scale this document. All measurements must be obtained from the stated dimensions.